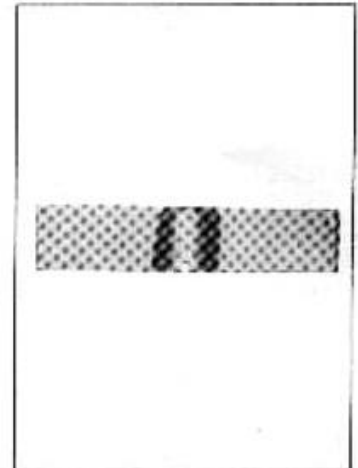
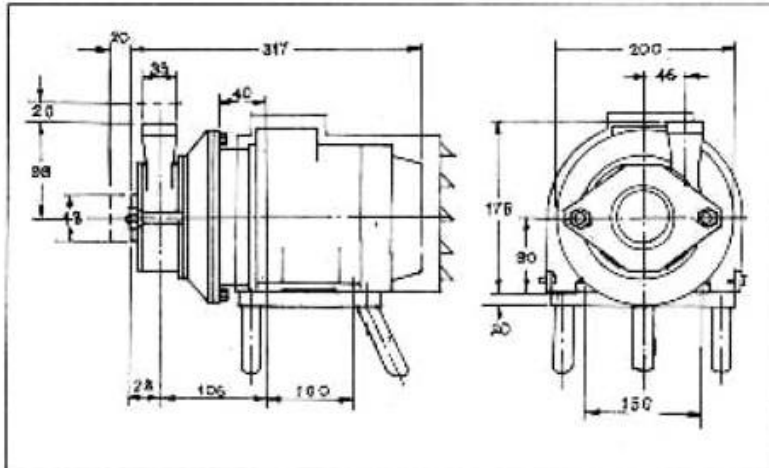
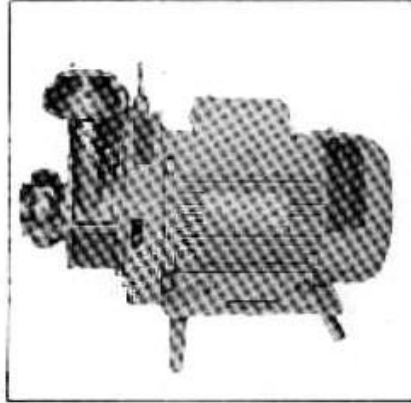


Milk Pump Model FM OS Specifications.



PUMPS FM OS PUMP



APPLICATIONS	: Food, Beverage, Chemical and other process Industries.
PRIME MOVER	: Standard motors of 1.5 hp running at 2840 rpm
SHAFT SEALS	: Balanced mechanical seal with rotating seal ring.
IMPELLERS	: Totally open impellers used 75 to 115mm .
CAPACITY AND HEAD	: MAX. CAPACITY : 30,000 LPH MAX. HEAD : 18 MWC
CONNECTIONS	: Complete unions according to optional std. (SMS / IDF/ FLANGE / ISO CLAMP)
WEIGHT	: 1.5 HP : 18 KG

Engineered & Exported by:

ENCON Consulting Engineers

[M-28, 7th Floor, Marigold,](#)

[Krishnakeval Township,](#)

[Kondhwa Khurd,](#)

[Pune 411048-INDIA.](#)

Tel/Fax: +91 20 6831210

Cell Phone: +91 94 22 00 2758

Email: encon@vsnl.com / encon@sify.com

FLOW CHARTS FOR CENTRIFUGAL PUMPS



TYPE : **FM OS**

RPM : 3000

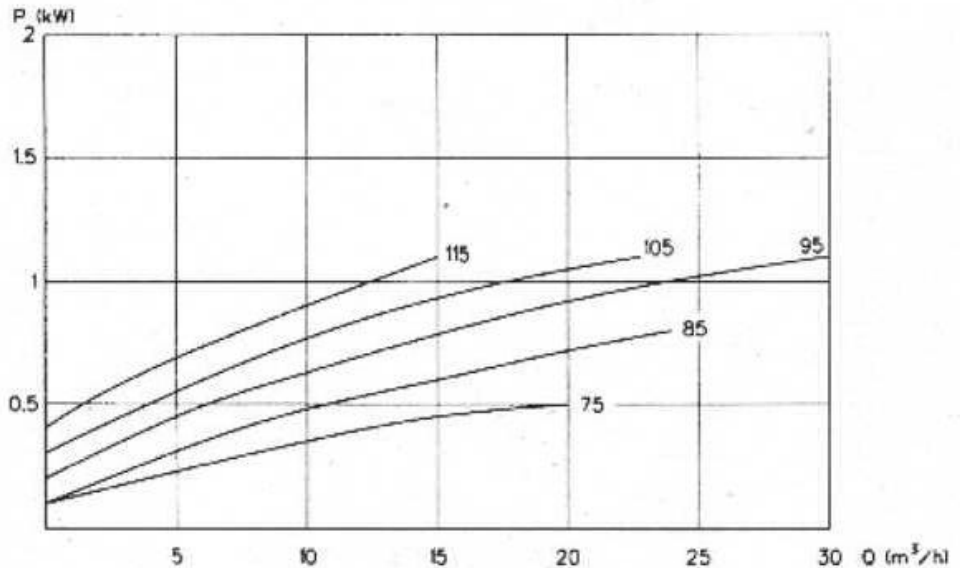
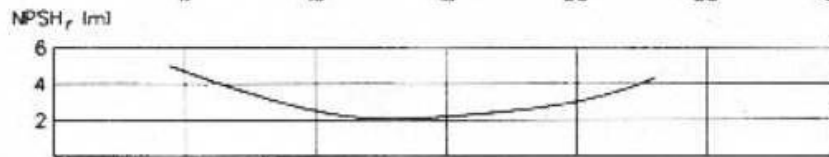
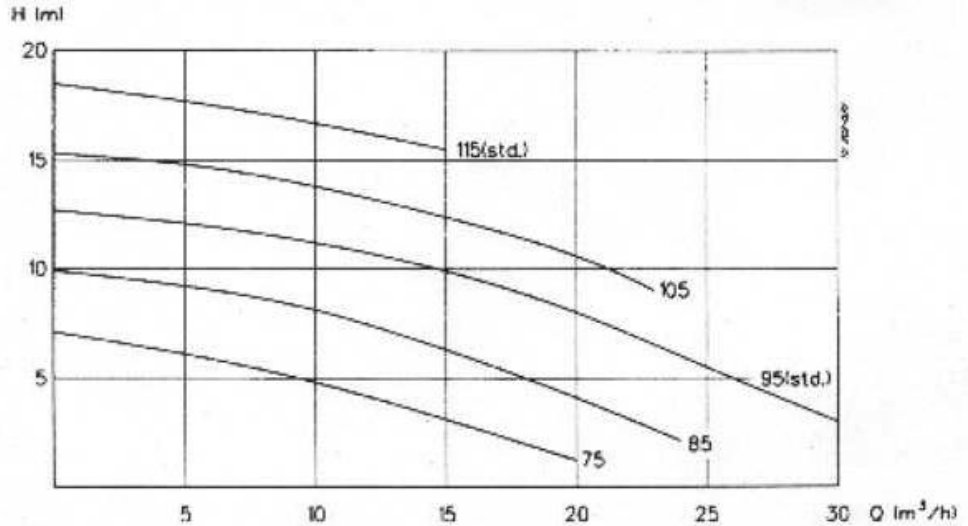
MOTOR : 1.5 HP

IMP. DIA 75 _____
 85 _____
 95 _____
 105 _____
 115 _____

TOL ACC TO ISO 2548

Q ± 8 %
 H ± 6 %

NOTE! The curves refer to max. motor: 1.1 kW, 2850 rpm. asynchr., 50 Hz.
DO NOT FORGET THE SAFETY FACTOR.



Engineered & Exported by:

ENCON Consulting Engineers

M-28, 7th Floor, Marigold,
 Krishnakeval Township,
 Kondhwa Khurd,
 Pune 411048-INDIA.

Tel/Fax: +91 20 6831210

Cell Phone: +91 94 22 00 2758

Email: encon@vsnl.com / encon@sify.com