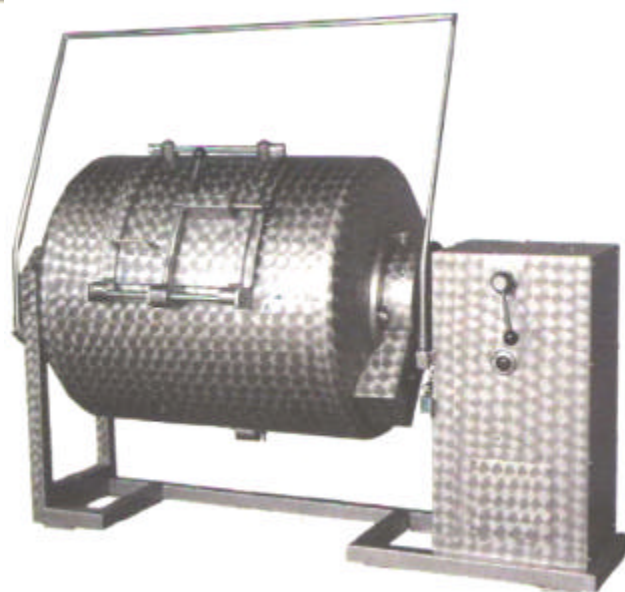
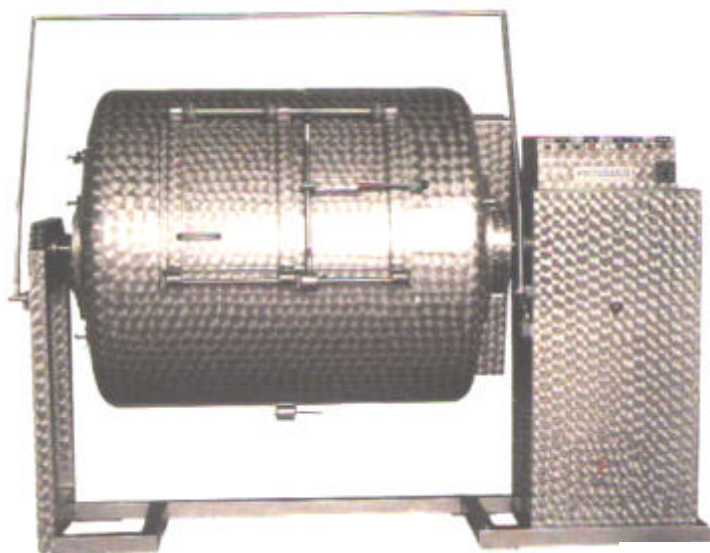


# Stainless Steel Butter Churn

Closed Structure En Bloc Type



A Range of models for a capacity from 100 up to 3000 Litres

- Closed Type Structure in welded sheet metal.
- Mechanism in top quality Stainless Steel & Carbon Steel.
- All wetted parts of 18/8 Stainless Steel SS-304.
- Internal surface sand blasted to prevent butter sticking to body.
- External surface either Plain or Circled Polished (Optional extra).
- Larger hatch in SS-304 construction with quick locking by means of central lever.
- Transmission, by chain or belt drives through gearbox.
- Speed control and Brake through two-speed motor or AC variable drives.
- Electric Drive in water proof casing.
- Movement mounted on ball bearing supported by heavy structure.
- Safety Guard with electric interlock lock provided
- When ordering please specify power voltage & Cycles (V & Hz)

Engineered & exported by:

**ENCON** Consulting Engineers

M-28, 7th Floor, Marigold,

Krishnakeval Township,

Kondhwa Khurd,

Pune 411048-INDIA.

Tel/Fax: +91 20 26831210

Cell Phone: +91 94 22 00 2758

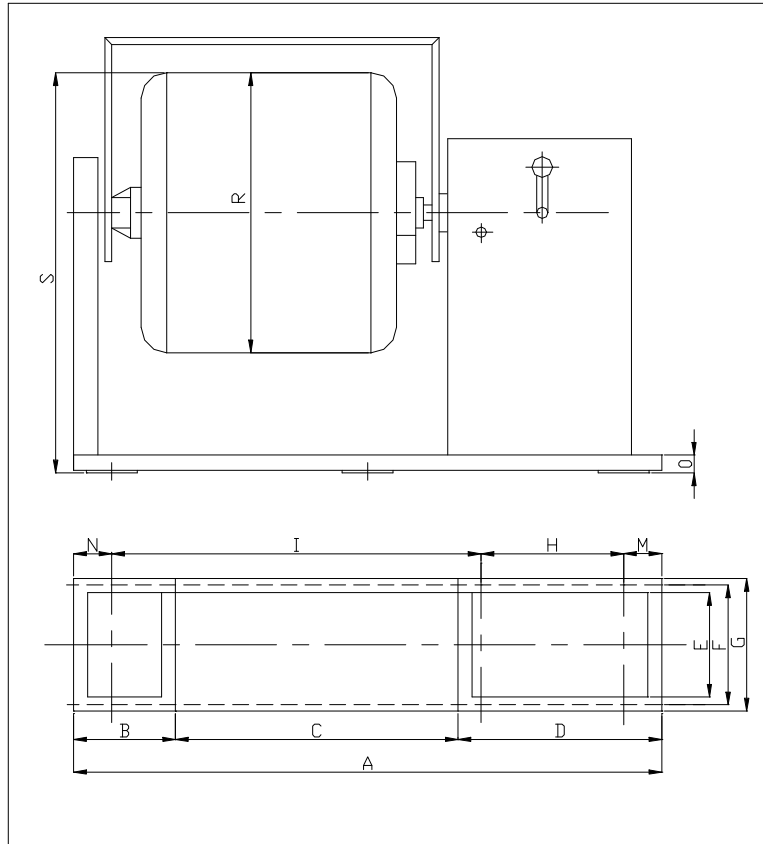


Email: [encon@vsnl.com](mailto:encon@vsnl.com) / [enconindia@hotmail.com](mailto:enconindia@hotmail.com)

# Stainless Steel Butter Churn

## Closed Structure En Bloc Type

### TECHNICAL SPECIFICATIONS



Cream Capacity Liters	Power HP	Churn Volume Liters	Dimension in mm														Weight
			A	B	C	D	E	F	G	H	I	M	N	O	R	S	Kg.
35	0.75	100	1215	80	705	420	220	275	300	350	770	35	60	50	730	980	180
70	1	200	1485	200	635	650	340	404	440	500	785	100	100	60	790	1130	330
100	1.5	300	1625	200	775	650	340	404	440	500	925	100	100	60	790	1130	345
130	1.5	400	1820	250	870	700	340	404	440	500	1120	100	100	60	790	1130	360
170	2	500	1710	250	760	700	340	404	440	500	1010	100	100	60	946	1260	370
200	2	600	1860	250	910	700	340	404	440	500	1160	100	100	60	946	1260	385
265	3	800	1885	250	935	700	340	404	440	500	1185	100	100	60	1099	1360	425
335	4	1000	2310	400	1110	800	410	470	520	600	1410	150	150	70	1099	1570	890
400	5.5	1200	2405	400	1205	800	410	470	520	700	1405	150	150	70	1099	1570	930
460	7.5	1400	2420	450	1170	900	580	650	700	700	1420	150	150	80	1270	1720	1100
500	7.5	1500	2520	450	1270	900	580	650	700	700	1520	150	150	80	1270	1720	1150
535	7.5	1600	2610	450	1360	900	580	650	700	700	1610	150	150	80	1270	1720	1220
670	10	2000															

Engineered & exported by:

**ENCON** Consulting Engineers

M-28, 7th Floor, Marigold,  
Krishnakeval Township,  
Kondhwa Khurd,  
Pune 411048-INDIA.

Tel/Fax: +91 20 26831210

Cell Phone: +91 94 22 00 2758



Email: [encon@vsnl.com](mailto:encon@vsnl.com) / [enconindia@hotmail.com](mailto:enconindia@hotmail.com)